

Fluid Control Valve

2W Series(2/2 Way Direct-Acting and Normally Closed)



Specification

| Type/Item | Port size | Orifice size (φ mm) | Cv | Valid area of section (mm ²) | Weight** (g) | Max. operating pressure differential | | Proof pressure | |
|-----------|------------|---------------------|------|--|--------------|--------------------------------------|-----|----------------|-----|
| | | | | | | MPa | psi | MPa | psi |
| 2WX030 | -06 PT1/8" | 1.5 | 0.10 | 1.8 | 305 | 3.0 | 450 | 5.0 | 750 |
| | -08 PT1/4 | | | | 295 | | | | |
| 2WH030 | -06 PT1/8" | 2.0 | 0.18 | 3.0 | 305 | 2.0 | 300 | | |
| | -08 PT1/4 | | | | 295 | | | | |
| 2W030 | -06 PT1/8" | 3.0 | 0.33 | 6.0 | 305 | 1.0 | 150 | | |
| | -08 PT1/4 | | | | 295 | | | | |
| 2WL030 | -06 PT1/8" | 4.0 | 0.55 | 10.0 | 305 | 0.5 | 75 | | |
| | -08 PT1/4 | | | | 295 | | | | |
| 2WT030 | -06 PT1/8" | 6.0 | 1.10 | 12.0 | 305 | 0.1 | 15 | | |
| | -08 PT1/4 | | | | 295 | | | | |
| 2WX050 | -10 PT3/8" | 3.0 | 0.34 | 6.1 | 620 | 3.0 | 450 | | |
| | -15 PT1/2 | | | | 600 | | | | |
| 2WH050 | -10 PT3/8" | 4.0 | 0.55 | 10.0 | 620 | 2.0 | 300 | | |
| | -15 PT1/2 | | | | 600 | | | | |
| 2W050 | -10 PT3/8" | 5.0 | 0.83 | 15.0 | 620 | 1.0 | 150 | | |
| | -15 PT1/2 | | | | 600 | | | | |
| 2WL050 | -10 PT3/8" | 7.0 | 1.40 | 25.0 | 620 | 0.5 | 75 | | |
| | -15 PT1/2 | | | | 600 | | | | |
| 2WT050 | -10 PT3/8" | 10.0 | 2.20 | 40.0 | 620 | 0.1 | 15 | | |
| | -15 PT1/2 | | | | 600 | | | | |

Valve's Specification

| | | | | |
|------------------------------------|--------------------------------|-------|--------|---------|
| Acting | Direct acting, Normally closed | | | |
| Adaptable fluid* | Air, Water, Oil, Vacuum | | | |
| Viscosity limit | Under 20 CST | | | |
| Ambient and fluid temperature (°C) | Water | Air | Oil | Ambient |
| | Max. 80 | 90 | 80 | 70 |
| | Min. 1 | -20** | -10*** | -20 |

*Note: In vacuum, the inlet and outlet should be instated reversibly; Please refer to P30 for details information of other's fluid;

Note: Dew point: -20 (°C) or less; *Note: 50CST or less.

*Note: NPT, BSPP Thread are available.

**Note: The weight in the table is the terminal valve's weight, 2W030 series grommet valve's weight is 10g less than terminal's, 2W050 series grommet valve's weight is 20g less than terminal's.

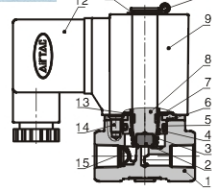
Coil Specification

| Valve type | Coil type | Power | Frequency (Hz) | Voltage range | Electrical entry | Power consumption (VA/W) | Insulation | Temp rise (°C) |
|------------|------------------|------------------|----------------|---------------|------------------|--------------------------|------------|----------------|
| 2W□030 | CDA116 CLA116 | AC | 50 | ±15% | Terminal (CDA) | 10.0VA | Class H | 35 |
| | | | 60 | | | 8.0VA | | 30 |
| | DC | - | ±10% | 6.5W | | 30 | | |
| | | CDA170 CLA170 | AC | 50 | | ±15% | | Grommet (CLA) |
| 60 | 22.0VA | | | 55 | | | | |
| DC | - | ±10% | 10.5W | 40 | | | | |

Please refer to page 29 for details information of coil.

Inner Structure

2W030 Terminal



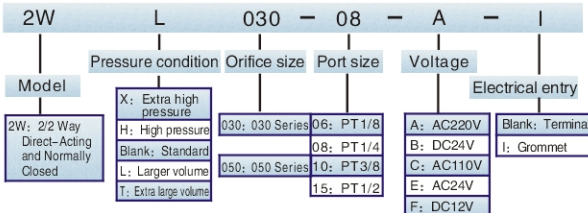
| NO. | Item | NO. | Item | NO. | Item |
|-----|---------------|-----|---------------|-----|----------|
| 1 | Body | 6 | Fixed plate | 11 | Gasket |
| 2 | Airtight ring | 7 | Wear ring | 12 | Terminal |
| 3 | Spring | 8 | Movable core | 13 | Washer |
| 4 | Fixed cap | 9 | Coil assembly | 14 | Screw |
| 5 | O-ring | 10 | E Clip | 15 | Filter |

Material of Major Parts

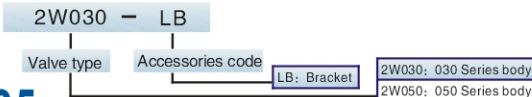
| Item/Type | 2W□030 | 2W□050 | Item/Type | 2W□030 | 2W□050 |
|---------------|-----------------|---------------|------------|--------|--------|
| Body | Brass | E Clip | 65Mn | | |
| Airtight ring | FPM-F* | Gasket | SPCC | | |
| Spring | Stainless steel | Filter | POM+SUS302 | | |
| O-ring | FPM-F | Electromagnet | Pure iron | | |
| Wear ring | PTFE | Movable core | Pure iron | | |
| Fixed plate | SPCC | Screw | Steel | | |

*Note: The standard's material is FPM-F, please contact us if other material needed.

Ordering Code of Valve

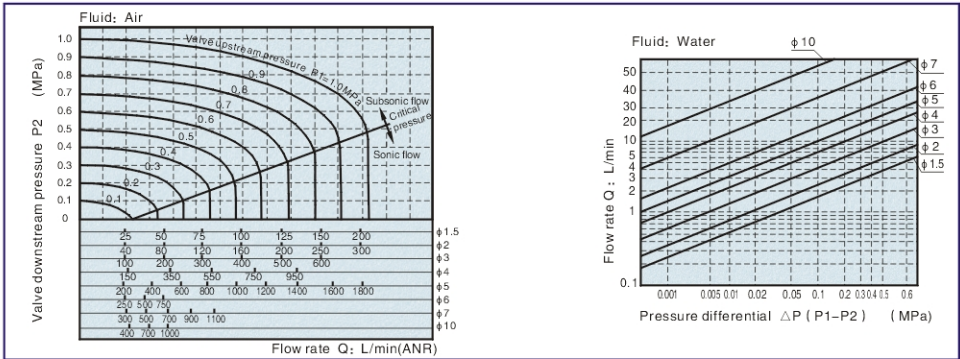


Ordering Code of Accessories

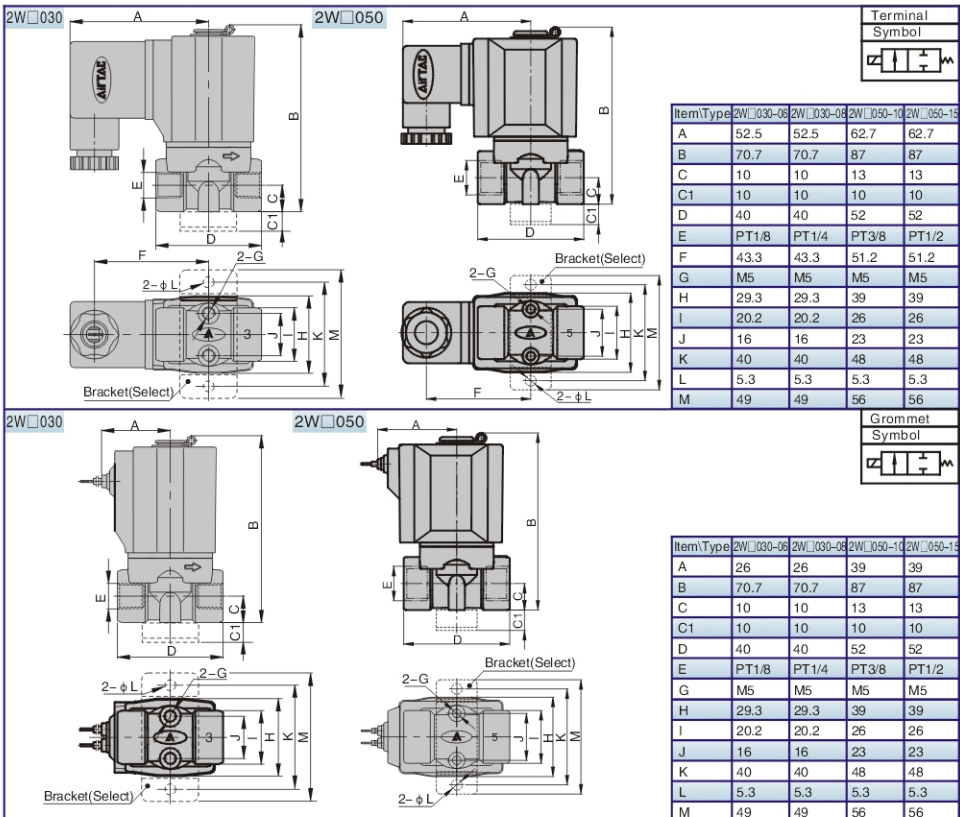


2W Series(2/2 Way Direct-Acting and Normally Closed)

Flow Chart



Dimensions



Fluid Control Valve

2W Series(2/2 Way Internally Piloted and Normally Closed)



Specification

| Type/Item | Port Size | Orifice size (φ mm) | Cv | Valid Area of section (mm ²) | Weight (g) | Operating pressure differential | | | | Proof pressure | |
|-----------|-----------|---------------------|-------|--|------------|---------------------------------|-----|----------|-----|----------------|-----|
| | | | | | | Max. MPa | psi | Min. MPa | psi | MPa | psi |
| 2W150-15 | PT1/2* | 15 | 5.50 | 100.0 | 720 | | | | | | |
| 2W200-20 | PT3/4 | 20 | 9.50 | 170.0 | 950 | 1.0 | 150 | 0.05 | 10 | 1.5 | 220 |
| 2W250-25 | PT1 | 25 | 12.50 | 220.0 | 1200 | | | | | | |

*Note: NPT, BSPP thread are available.

**Note: The weight in the table is the terminal valve's weight, grommet valve's weight is 10g less than terminal's.

Valve's Specification

| | | | | | |
|------------------------------------|-------------------------------------|-------|--------|-----|---------|
| Acting | Internally piloted, Normally closed | | | | |
| Adaptable fluid* | Air, Water, Oil | | | | |
| Viscosity limit | Under 20 CST | | | | |
| Ambient and fluid temperature (°C) | | Water | Air | Oil | Ambient |
| | Max. | 80 | 90 | 80 | 70 |
| Min. | 1 | -20** | -10*** | -20 | |

*Note: Please refer to P30 for details information of other's fluid;

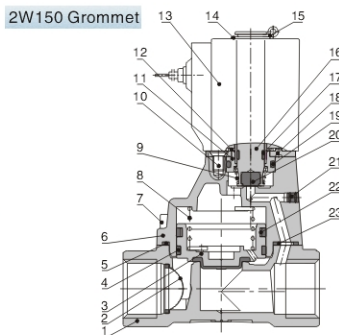
Note: Dew point: -20 (°C) or less; *Note: 50CST or less.

Coil Specification

| Valve type | Coil type | Power | Frequency (Hz) | Voltage range | Electrical entry | Power consumption (VA/W) | Insulation | Temp rise (°C) |
|------------|-----------|-------|----------------|---------------|------------------|--------------------------|------------|----------------|
| 2W150 | CDA116 | AC | 50 | ± 15% | Terminal (CDA) | 10.0VA | Class H | 35 |
| 2W200 | CLA116 | DC | 60 | | Grommet (CLA) | 8.0VA | | 30 |
| 2W250 | | | - | ± 10% | | 6.5W | | 30 |

Please refer to page 29 for details information of coil.

Inner Structure



| NO. | Item | NO. | Item | NO. | Item |
|-----|---------------|-----|---------------|-----|---------------|
| 1 | Body | 9 | Spring | 17 | Wear ring |
| 2 | Filter | 10 | Screw | 18 | Fixed plate |
| 3 | Piston | 11 | Fixed cap | 19 | O-ring |
| 4 | Wear ring | 12 | Washer | 20 | Airtight ring |
| 5 | O-ring | 13 | Coil assembly | 21 | Plug |
| 6 | Cover | 14 | Washer | 22 | Spring |
| 7 | Screw | 15 | E Clip | 23 | Spacer |
| 8 | Bonnet spring | 16 | Movable core | | |

Ordering Code of Valve

| | | | | | | | |
|--|---|-----------------------------------|--|-------------------------------|---|---|---|
| 2W | 150 | - | 15 | - | A | - | I |
| Model | Pressure condition | Port size | Voltage | Electrical entry | | | |
| 2W: 2/2 Way internally piloted and Normally Closed | 150: φ 15mm 200: φ 20mm 250: φ 25mm | 15: PT1/2 20: PT3/4 25: PT1 | A: AC220V B: DC24V C: AC110V E: AC24V F: DC12V | Blank: Terminal I: Grommet | | | |

Material of Major Parts

| Item/Type | 2W150-250 | Item/Type | 2W150-250 |
|----------------|-----------------|---------------|--------------|
| Body and Cover | Brass | E Clip | 65Mn |
| Filter | POM+SUS302 | Gasket | SPCC |
| Spring | Stainless steel | Airtight ring | FPM-F* |
| O-ring | FPM-F | Electromagnet | Pure iron |
| Wear ring | PTFE | Movable core | Pure iron |
| Fixed plate | SPCC | Piston | Brass+FPM-F* |

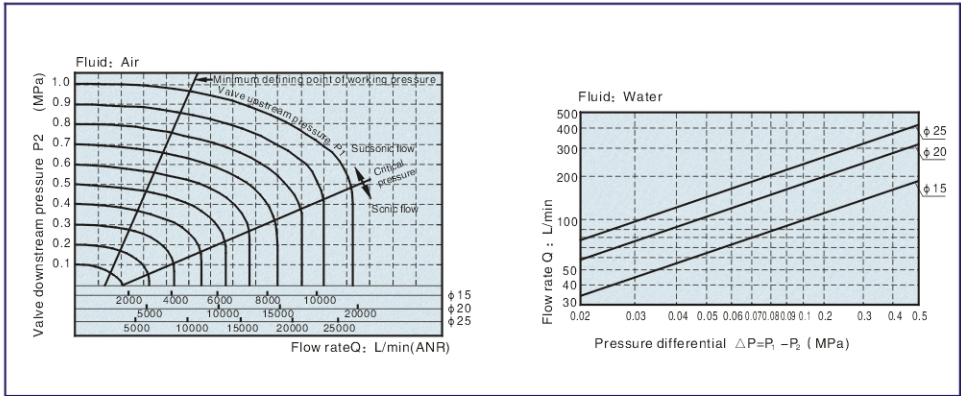
*Note: The standard's material is FPM-F, please contact us if other material needed.

Ordering Code of Accessories

| | | |
|------------------------|------------------|-------------|
| 2W150 | - | LB |
| Valve type | Accessories code | LB: Bracket |
| 2W150: 150 Series body | | |
| 2W200: 200 Series body | | |
| 2W250: 250 Series body | | |

2W Series (2/2 Way Internally Piloted and Normally Closed)

Flow Chart



Dimensions

